
[Home](#) > [Streets & Parks](#) > [Park Design](#) > / [Civic Space](#)

[Details](#) > [Connect](#) >

Introduction

Develop parks that are well connected with the surrounding environment, both visually and physically. Ensure that designs maximise accessibility, and provide safe and legible movement networks that cater for a range of people.

[Details](#) > [Connect](#) >

Connect People

Connect people to the park and to each other.

Create convenient and safe connections with surrounding cycle, walking and public transport networks which are easy to access and navigate. Make the park accessible for those with mobility and sensory impairments, where practical. Carefully plan the layout and clustering of facilities, so that people can meet, socialise, and spend time together in the park.

Create spaces for people to meet and spend time together

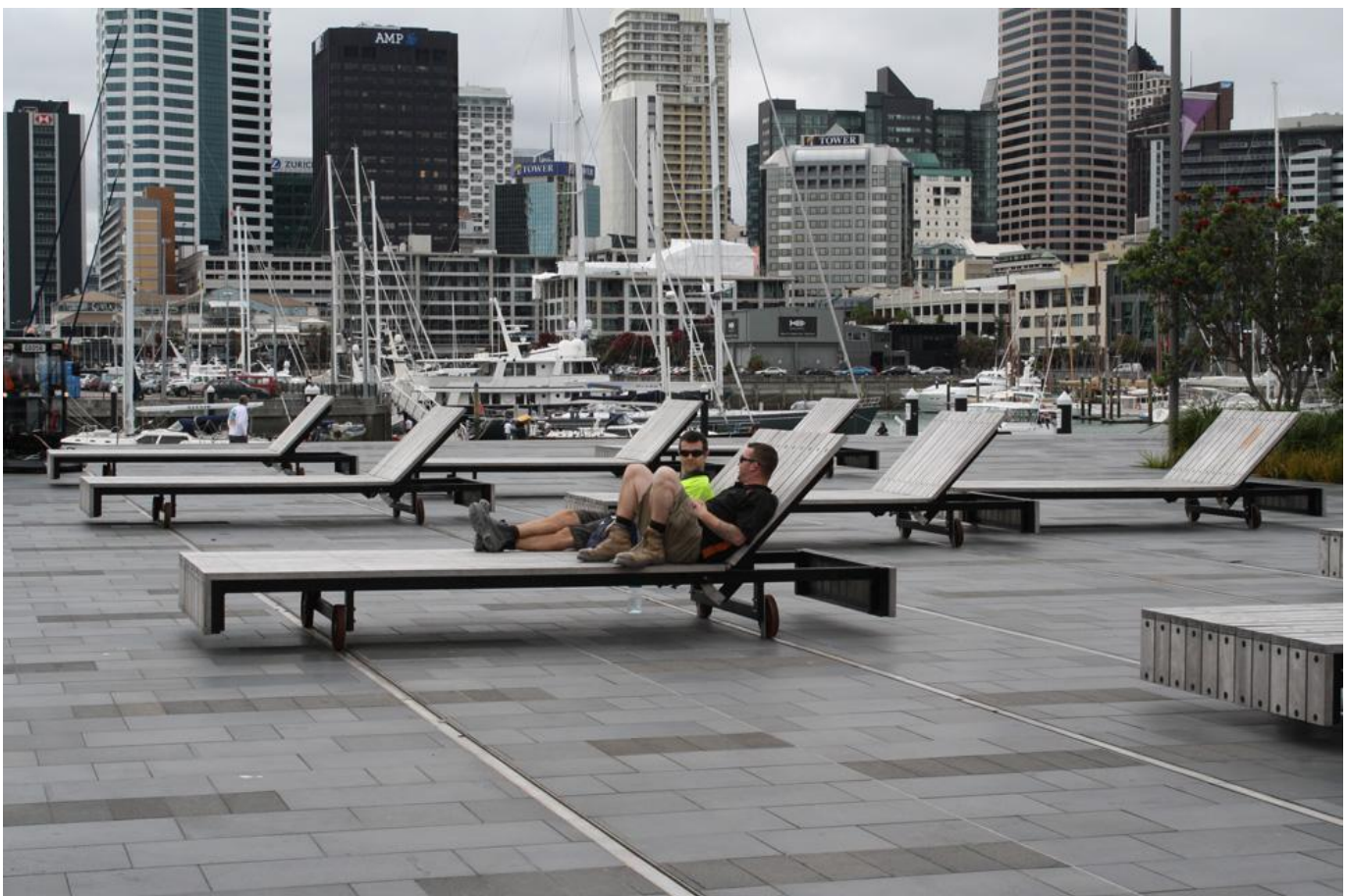
Civic spaces are often places where communities gather, celebrate and hold events. Therefore it is critical to provide appropriate amenities and universal access into and within these places to ensure they are inclusive of everyone.

Do this by:

- providing sheltered comfortable areas for people to relax and gather
- designing flexible spaces that can be used by a variety of groups for various purposes
- strengthening connections with neighbouring civic and commercial facilities to create active edges where people can engage with and enjoy the public space
- catering for sensory and mobility impairments needs
- providing attractive entrances that incorporate artistic features that invite people into the space
- providing features that attract and appeal to children and young people.



Large seating areas located at the side of this civic space provide a variety of gathering opportunities while maintaining clear access and movement through the space.



Wynyard Quarter, Auckland

Large movable loungers on the waterfront allow different sized groups to gather. These can be pushed together to accommodate a range of events.



Nell Fisher Reserve, Birkenhead

This reserve provides a playspace for young children and seating for parents and caregivers.

Details > Connect >

Connect Places

Connect our parks to one another and to the surrounding neighbourhood.

Develop greenways that connect our parks, streets and esplanade reserves to create a green movement network across Auckland and around the coast. Create or improve connections with surrounding transport networks, community facilities and local businesses. Use wayfinding signage to help people find their way.

Create strong easy connections and access

Civic spaces often link cities and communities together, providing short cuts across town or important links for commuters, shoppers and tourists. They are the hubs of our civic lives, where people often meet and tourists go to get oriented.

Encourage good connections by:

- creating fluid links into the surrounding public transport network, cycleways or walkways

- providing clear pathways that take people across the space in the ways they are most likely to walk (accommodating desire lines)
- protecting important visual connections to the landscape or built features
- strengthening connections with neighbouring civic and commercial facilities to create active edges
- providing for sensory and mobility impairment needs
- incorporating high quality wayfinding signage at key locations
- providing visual entry cues and clear lines of sight.



This civic space is well-connected with the surrounding environment, encouraging many people to meet and gather here.

Details > Connect >

Connect The Environment

Identify and understand the surrounding landscape and wider ecological systems.

Make ecosystems more resilient by using vegetation to create connections and corridors between parks and wider networks.

Protect and enhance viewpoints and significant natural features.

Ensure that movement networks through the natural environment respect the existing terrain, flora and fauna, heritage and cultural values.



St Patrick's Square, Auckland CBD

This civic space includes a water feature celebrating the transition between Wyndham Street and Swanson Street, connecting people to their environment.